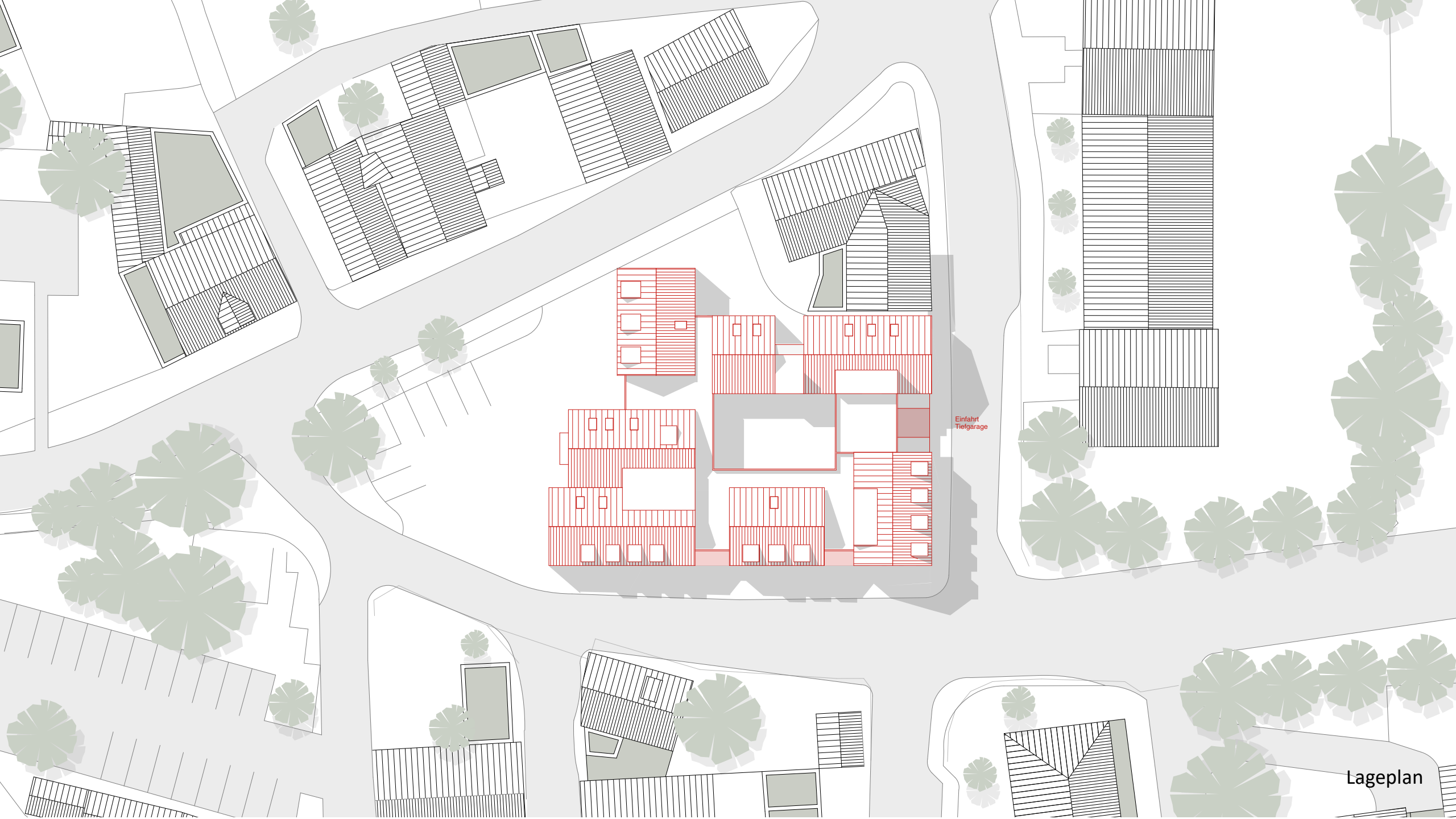


NEUBAU EINES WOHN- UND GESCHÄFTSHAUSES

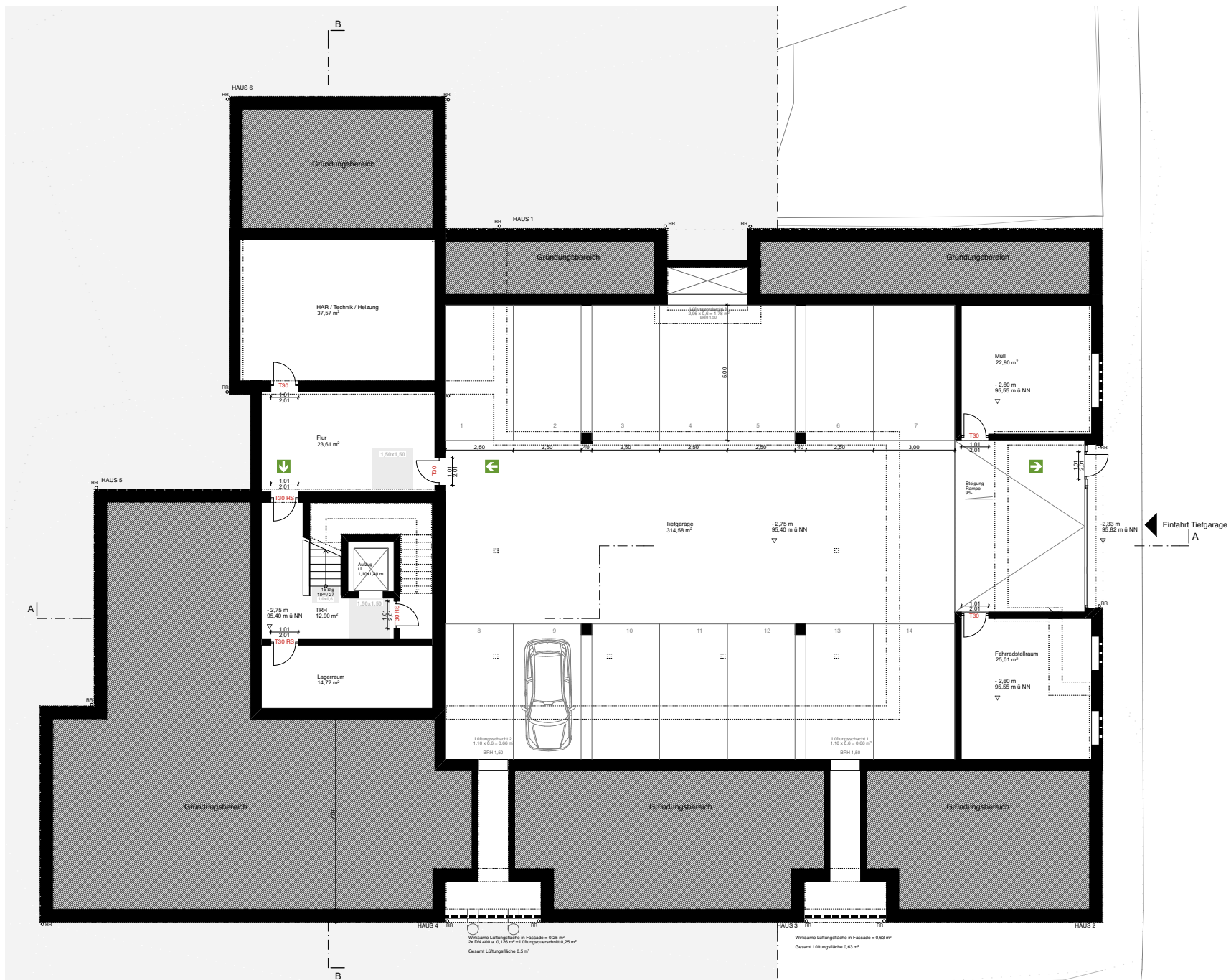
ALTER BERG 2+4; SEPPENRADE

Spital-Frenking + Schwarz

ARCHITEKTEN | STADTPLANER | BDA



Einfahrt
Tiefgarage



Grundriss KG



Grundriss EG





Ansicht Westen

OK First
+10.41st m = 108,56^{er} m ü NN

OK Gaube
+8.55 m = 106,70 m ü NN

OK Traufe
+6.42 m = 104,57 m ü NN

OKFF EG
+0.00 m = 98,15 m ü NN

OK Einfahrt
-2.32^{er} m = 95,82^{er} m ü NN

OK First
+10.41st m = 108,56^{er} m ü NN

OK First
+10.41st m = 108,56^{er} m ü NN

OK First
+10.41st m = 108,56^{er} m ü NN

OK Gaube
+8.55 m = 106,70 m ü NN

OK Traufe
+6.42 m = 104,57 m ü NN

OKFF EG
+0.00 m = 98,15 m ü NN



Ansicht Norden

OK First
+10.41 m = 108.56 m ü NN

OK Gaube
+8.55 m = 106.70 m ü NN

OK Traufe
+6.42 m = 104.57 m ü NN

OKFF EG
±0.00 m = 98.15 m ü NN

OK Gaube
+9.30 m = 107.45 m ü NN

OK Gaube
+8.55 m = 106.70 m ü NN

OK First
+10.41 m = 108.56 m ü NN

OK Traufe
+6.42 m = 104.57 m ü NN

Einfahrt Tiefgarage
-2.32 m



Ansicht Süden

OK First
+10.41⁷ m = 108,56⁷ m ü NN

OK Gaube
+8.55 m = 106,70 m ü NN

OKFF DG
+5,80 m = 103,95 m ü NN

OKFF 1.OG
+2,90 m = 101,05 m ü NN

OKFF EG
±0,00 m = 98,15 m ü NN

OK First
+10.41⁷ m = 108,56⁷ m ü NN

OK Gaube
+8.55 m = 106,70 m ü NN

OK Gaube
+8.55 m = 106,70 m ü NN

OK First
+10.41⁷ m = 108,56⁷ m ü NN

OK Gaube
+8.55 m = 106,70 m ü NN

OK Traufe
+5,42 m = 104,57 m ü NN

Einfahrt Tiefgarage
-2,32⁷ m = 95,82⁷ m ü NN



3,89⁷
6,62⁷
2,32⁷

Schnitt A-A

OK First
+10.41⁷ m = 108,56⁷ m ü NN

OK Gaube
+8.55 m = 106,70 m ü NN

OKFF DG
+5.80 m = 103,95 m ü NN

OKFF 1.OG
+2.90 m = 101,05 m ü NN

OKFF EG
±0.00 m = 98,15 m ü NN

OKFF KG
-2.75 m = 95,10 m ü NN

OK Gaube
+9.30 m = 107,45 m ü NN

OK First
+10.41⁷ m = 108,56⁷ m ü NN

OK FD
+8.80 m = 106,95 m ü NN

OK First
+10.41⁷ m = 108,56⁷ m ü NN

OK Gaube
+8.55 m = 106,70 m ü NN

OK Traufe
+6.42 m = 104,57 m ü NN

OKFF EG
±0.00 m = 98,15 m ü NN



Schnitt B-B



Blick von Osten



Blick von Westen